

MRC Holland Support

Support > Help Centre > MLPA & Coffalyser.Net > Coffalyser.Net Data Analysis Software > Version Information > [How do I find which version of Coffalyser.Net I have installed?](#)

How do I find which version of Coffalyser.Net I have installed?

This article was retrieved from support.mrcholland.com on Monday, 2nd October 2023.

There are two easy ways to find out which version of Coffalyser.Net™ you have installed.

Method 1: About dialog

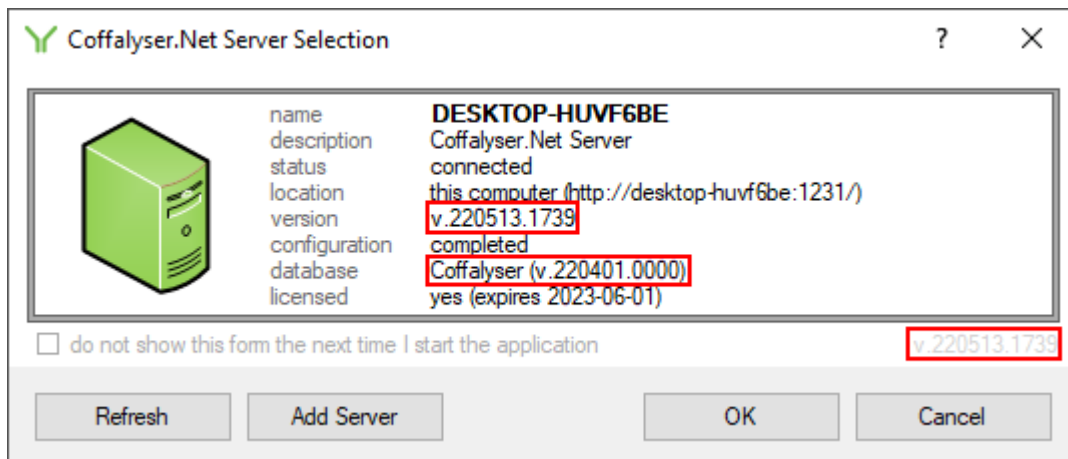
- Start Coffalyser.Net.
- Log in to your server.
- Click on About in the menu.
- A section on the right-hand side of the dialog lists the version of Coffalyser.Net that you are using (client version), the version used by the server you are connected to (server version), and the version of the database used by the server (database version).

Coffalyser.Net™

client version	v.220513.1739
server version	v.220513.1739
database version	v.220401.0000

Method 2: Coffalyser.Net Server Selection dialog

- Start Coffalyser.Net.
- You should see the Coffalyser.Net Server Selection dialog. If you see the Login dialog instead, click on the select button to bring up the server selection dialog.
- The version of the Coffalyser.Net application that you are using is displayed in grey in the bottom-right corner of the dialog. You can also see the version of the software and the version of the database for each server in this dialog.



Background

Coffalyser.Net consists of three components that have independent version numbers. The *client* is the end-user application that you interact with, the *database* contains your data and settings, and the *server* takes care of the communication between the *client* and the *database*. In most cases, the version numbers of the *client* and the *server* will be identical. This is also the version number that is used most often in communication and documentation. The *database* may have a different version number, which may remain unchanged for multiple versions of the *client* and *server*. You can check which versions of the *client* and *server* correspond to a particular *database* version in [this article](#).

Note

This article is about Coffalyser.Net for conventional MLPA data analysis. For information about Coffalyser digitalMLPA for digitalMLPA data analysis, see [this article](#).

Tags

Coffalyser.Net

Related Pages

- [Coffalyser.Net version history](#)

Disclaimer

The information provided in this material is correct for the majority of our products. However, for certain applications, the instructions for use may differ. In the event of conflicting information, the relevant instructions for use take precedence.