

# MRC Holland Support

Help Centre > MLPA & Coffalyser.Net > Coffalyser.Net Data Analysis Software > Tips & Tricks for Coffalyser.Net > How can I zoom in and out in Coffalyser.Net?

## How can I zoom in and out in Coffalyser.Net?

This article was retrieved from MRC Holland Support (support.mrcholland.com) on Thursday, 10th July 2025.

### Note

This article is part of the [Coffalyser.Net Tips & Tricks](#) collection.

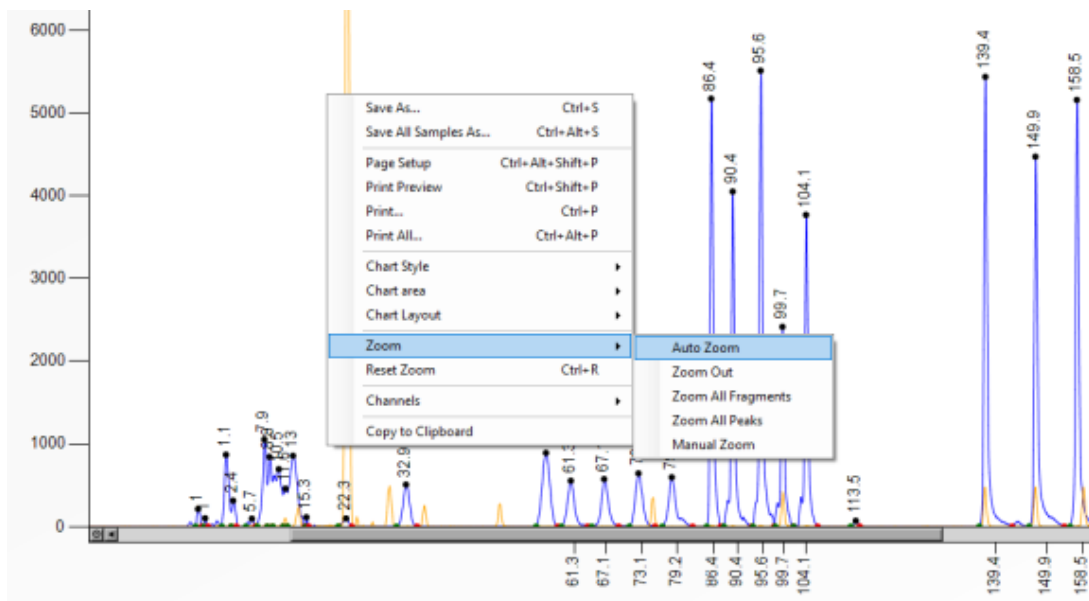
Coffalyser.Net allows you to select several zoom options for peak profiles, electropherograms and ratio charts.

## Peak profiles and electropherograms

The zoom options for peak profiles and electropherograms can be found in the Zoom menu, which can be accessed after right-clicking on the peak pattern. The available options are:

- Auto Zoom: The default zoom level.
- Zoom Out: Zoom out by one step.
- Zoom All Fragments: Zoom in on all identified MLPA control fragments and probes.
- Zoom All Peaks: Zoom in on all size-called signals, including (nonspecific) signals.
- Manual Zoom: You can manually zoom in by dragging a rectangle.
- Reset Zoom: Zoom out completely.

You can also zoom out one step by double-clicking in the charts. You can also right-click and select Reset Zoom, or use the keyboard shortcut Ctrl + R. To return to the original view, right-click and choose Zoom > Auto Zoom.



## Ratio charts

You can manually zoom in by dragging a rectangle. To zoom out again, right-click on the

ratio chart and choose either:

- Zoom > Auto Zoom: The default zoom level.
- Zoom > Zoom Out and Reset Zoom: Restore the default zoom level.

Tags

Coffalyser.Net

Related Content

- [How can I resize data grids in Coffalyser.Net?](#)

Disclaimer

The information provided in this material is correct for the majority of our products. For certain applications, the instructions for use may differ. In the event of conflicting information, the relevant instructions for use take precedence.