

# MRC Holland Support

Support > Help Centre > MLPA & Coffalyser.Net > Coffalyser.Net Data Analysis Software > Data Analysis > Comparative Analysis > How can I open the results of an individual sample directly from the comparative analysis experiment explorer in Coffalyser.Net?

## How can I open the results of an individual sample directly from the comparative analysis experiment explorer in Coffalyser.Net?

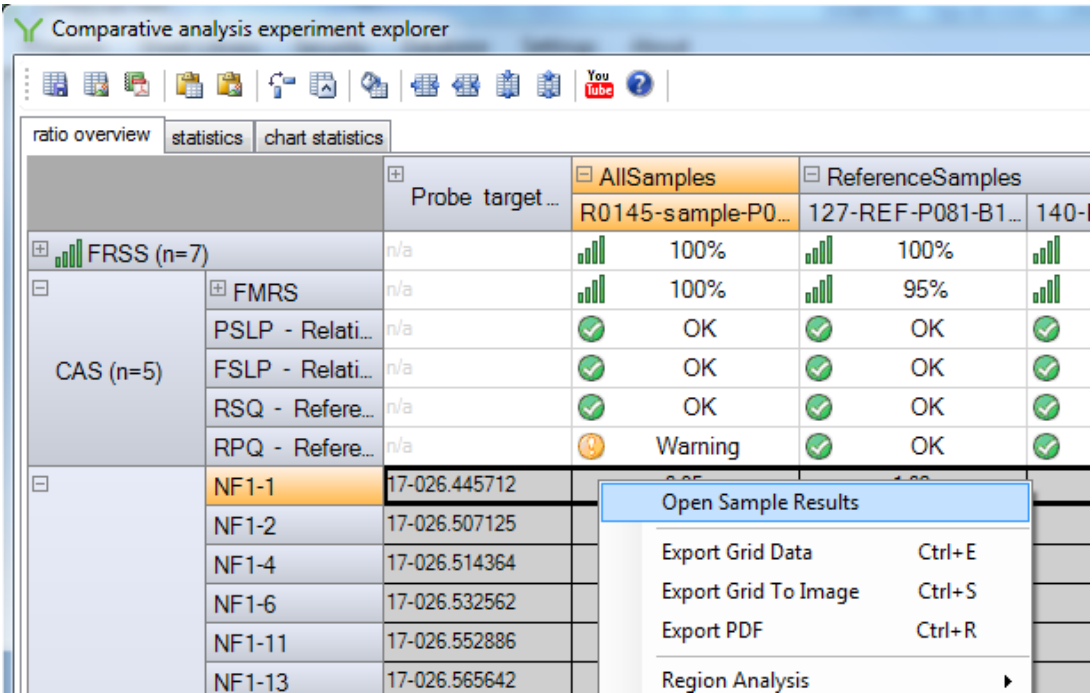
This article was retrieved from support.mrcholland.com on Sunday, 11th May 2025.

### Note

This article is part of the [Coffalyser.Net Tips & Tricks](#) collection.

Coffalyser.Net allows you to open the results of individual samples directly from the comparative analysis experiment explorer. It is not necessary to close the experiment explorer first.

To open a sample's results, right-click on the column of a specific sample in the grid and select Open Sample Results. Please note that you cannot right-click on the sample name itself.



Tags

Coffalyser.Net

## Disclaimer

---

*The information provided in this material is correct for the majority of our products. However, for certain applications, the instructions for use may differ. In the event of conflicting information, the relevant instructions for use take precedence.*